



SETEC POWER

www.setec-power.com

• Solar Pumping System •



Acquire **Excellent**
Cost-effective Solution

Configuration of Solar Pumping Systems

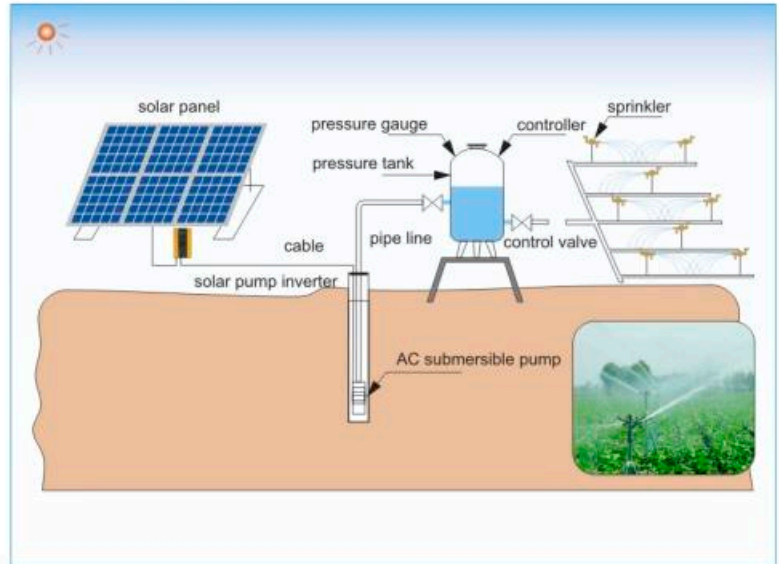
System	Solar Pump Inverter						PV Array	Adapting AC Pump		
	Model	Rated Power	Input DC Voltage	MPPT Voltage	Output AC Voltage	Output Frequency	Power	Motor Power		Rated Voltage
		kW	V	V	V	Hz		HP	kW	V
1	SGY750L	0.75	280-430	280-350	3 phase AC220	0-50/60	0.6	0.5	0.37	3 phase 220
2	SGY750L	0.75	280-430	280-350	3 phase AC220	0-50/60	0.825	0.75	0.55	3 phase 220
3	SGY1500L	1.5	280-430	280-350	3 phase AC220	0-50/60	1.125	1	0.75	3 phase 220
4	SGY1500L	1.5	280-430	280-350	3 phase AC220	0-50/60	1.65	1.5	1.1	3 phase 220
5	SGY2200L	2.2	280-430	280-350	3 phase AC220	0-50/60	2.25	2	1.5	3 phase 220
6	SGY3700L	3.7	280-430	280-350	3 phase AC220	0-50/60	3.3	3	2.2	3 phase 220
7	SGY3700L	3.7	280-430	280-350	3 phase AC220	0-50/60	4.5	4	3	3 phase 220
8	SGY5500L	5.5	280-430	280-350	3 phase AC220	0-50/60	5.55	5	3.7	3 phase 220
9	SGY5500L	5.5	280-430	280-350	3 phase AC220	0-50/60	6	5.5	4	3 phase 220
10	SGY5500L	5.5	280-430	280-350	3 phase AC220	0-50/60	6.75	6	4.5	3 phase 220
11	SGY750H	0.75	450-750	480-600	3 phase AC380	0-50/60	0.6	0.5	0.37	3 phase 380
12	SGY750H	0.75	450-750	480-600	3 phase AC380	0-50/60	0.825	0.75	0.55	3 phase 380
13	SGY1500H	1.5	450-750	480-600	3 phase AC380	0-50/60	1.125	1	0.75	3 phase 380
14	SGY1500H	1.5	450-750	480-600	3 phase AC380	0-50/60	1.65	1.5	1.1	3 phase 380
15	SGY2200H	2.2	450-750	480-600	3 phase AC380	0-50/60	2.25	2	1.5	3 phase 380
16	SGY3700H	3.7	450-750	480-600	3 phase AC380	0-50/60	3.3	3	2.2	3 phase 380
17	SGY3700H	3.7	450-750	480-600	3 phase AC380	0-50/60	4.5	4	3	3 phase 380
18	SGY5500H	5.5	450-750	480-600	3 phase AC380	0-50/60	5.55	5	3.7	3 phase 380
19	SGY5500H	5.5	450-750	480-600	3 phase AC380	0-50/60	6	5.5	4	3 phase 380
20	SGY5500H	5.5	450-750	480-600	3 phase AC380	0-50/60	6.75	6	4.5	3 phase 380
21	SGY7500H	7.5	450-750	480-600	3 phase AC380	0-50/60	8.25	7.5	5.5	3 phase 380
22	SGY7500H	7.5	450-750	480-600	3 phase AC380	0-50/60	9	8	6	3 phase 380
23	SGY11KH	11	450-750	480-600	3 phase AC380	0-50/60	11.25	10	7.5	3 phase 380
24	SGY11KH	11	450-750	480-600	3 phase AC380	0-50/60	13.8	12.5	9.2	3 phase 380
25	SGY15KH	15	450-750	480-600	3 phase AC380	0-50/60	16.5	15	11	3 phase 380
26	SGY15KH	15	450-750	480-600	3 phase AC380	0-50/60	19.5	18.5	13	3 phase 380
27	SGY18KH	18	450-750	480-600	3 phase AC380	0-50/60	22.5	20	15	3 phase 380
28	SGY22KH	22	450-750	480-600	3 phase AC380	0-50/60	27.8	25	18.5	3 phase 380
29	SGY30KH	30	450-750	480-600	3 phase AC380	0-50/60	33	30	22	3 phase 380
30	SGY30KH	30	450-750	480-600	3 phase AC380	0-50/60	39	35	26	3 phase 380
31	SGY37KH	37	450-750	480-600	3 phase AC380	0-50/60	45	40	30	3 phase 380
32	SGY45KH	45	450-750	480-600	3 phase AC380	0-50/60	56	50	37	3 phase 380
33	SGY55KH	55	450-750	480-600	3 phase AC380	0-50/60	68	60	45	3 phase 380
34	SGY75KH	75	450-750	480-600	3 phase AC380	0-50/60	83	73	55	3 phase 380
35	SGY75KH	75	450-750	480-600	3 phase AC380	0-50/60	98	86	65	3 phase 380

Applications

- Irrigation for large field of fruit, vegetable or crop
- Irrigation for desert plant
- Irrigation for garden and park
- Irrigation for greenhouse vegetable or flower

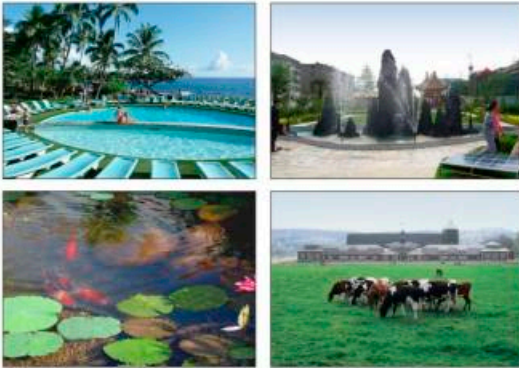


Structure diagram



Application

- Fish pond water level maintenance aeration
- Swimming pool circulation & filtration pumps
- Surface water pumping for landscaping streams and waterfalls
- Cattle, pigs or other livestock watering



Structure diagram

